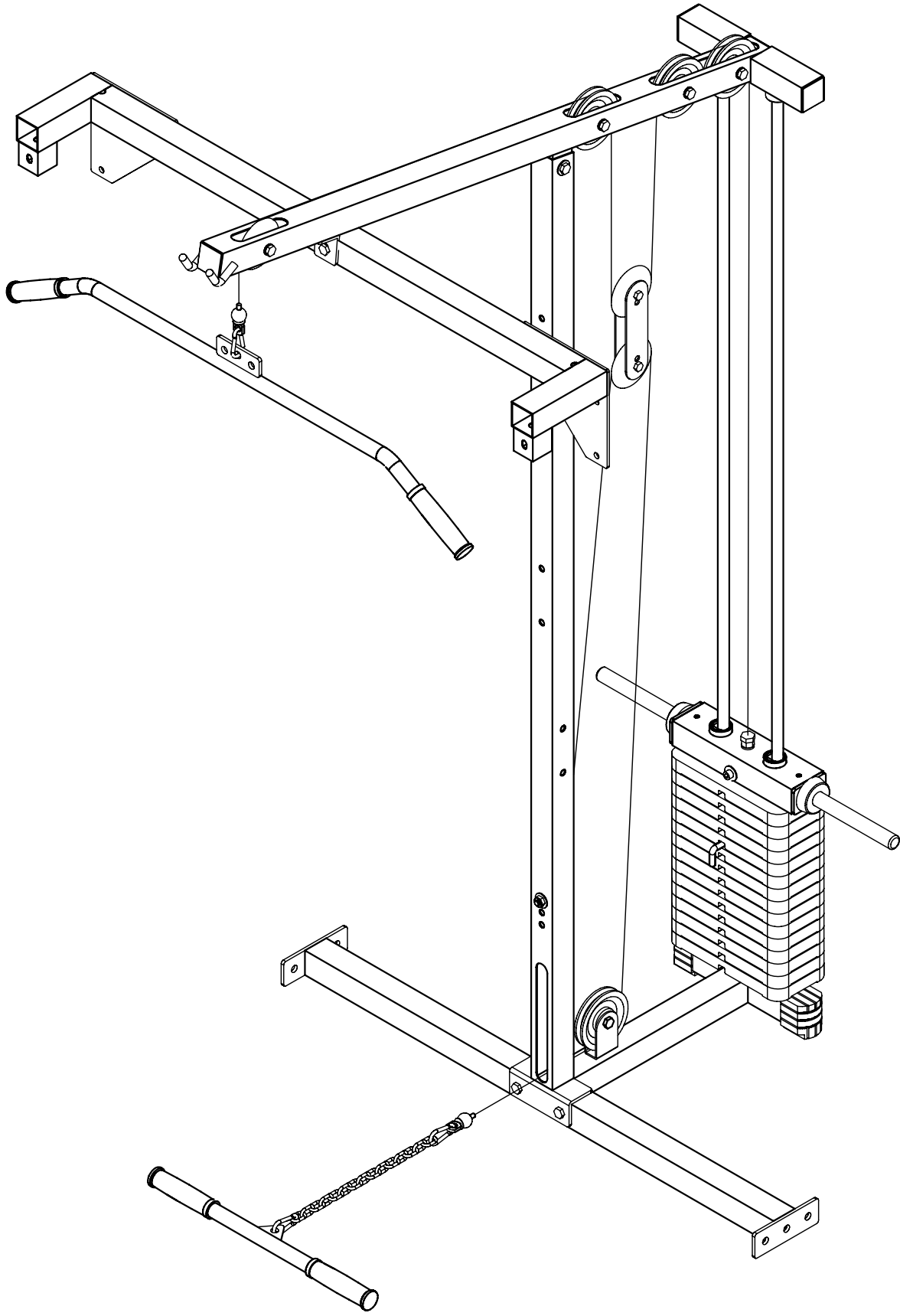


PLA-144

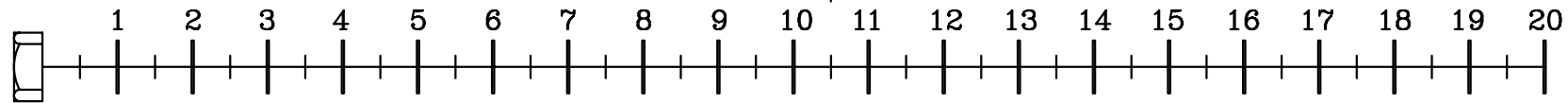
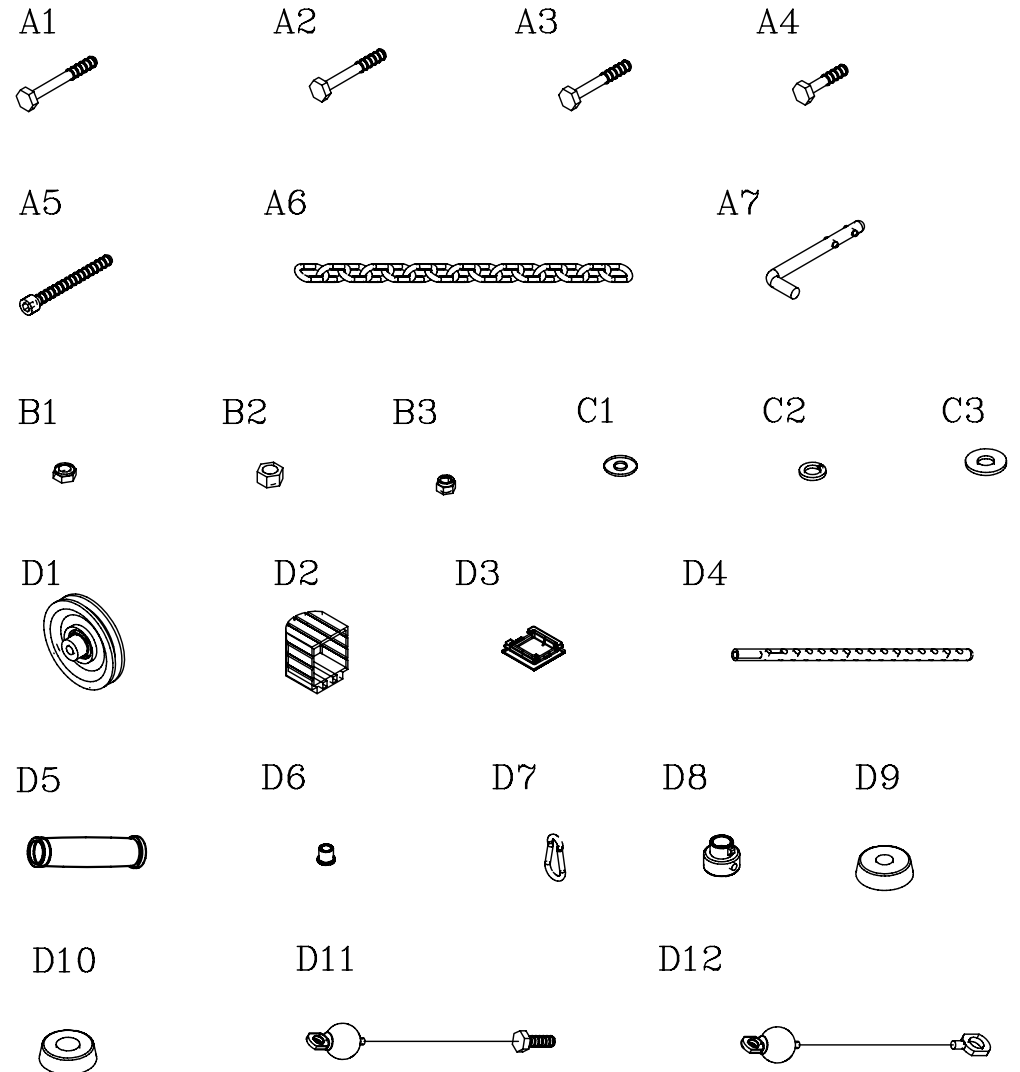


VERSION 0302

PLA-144

HARDWARE ILLUSTRATION SHEET

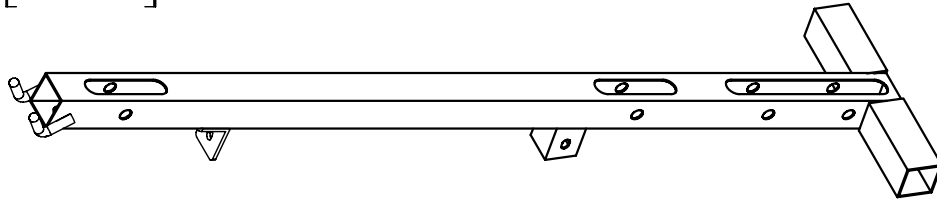
	Qty.
A1. M10X75 HEX HEAD BOLT -----	[2PCS]
A2. M10X70 HEX HEAD BOLT-----	[1PCS]
A3. M10X65 HEX HEAD BOLT -----	[6PCS]
A4. M10X40 HEX HEAD BOLT-----	[3PCS]
A5. CAP 3/8"X3 1/2" HEX HEAD BOLT-----	[1PCS]
A6. STEEL CHAIN -----	[1PCS]
A7. PON PIN-----	[1PCS]
B1. M10 NYLON LOCK NUT-----	[12PCS]
B2. 1/2" LOCK NUT -----	[1PCS]
B3. 3/8" NYLON LOCK NUT -----	[1PCS]
C1. M10 (I.D) WASHER-----	[5PCS]
C2. 1/2" SPRING WASHER-----	[1PCS]
C3. M10Xø19 (I.D) WASHER-----	[2PCS]
D1. ø110 PULLEY (9213-001) -----	[7PCS]
D2. 50X50 FOOT CAP (9212-003)-----	[3PCS]
D3. 50X50 END CAP (9211-005)-----	[4PCS]
D4. WEIGHT SELECTOR BAR (8210-052)-----	[1PCS]
D5. ø1"X135 RUBBER GRIP (9212-016)-----	[4PCS]
D6. ø16 STEEL BUSHING (9211-041)-----	[8PCS]
D7. ø6 SPRING SNAP LINK (8810-002)-----	[3PCS]
D8. ø3/4" SHAFT COLLAR (9211-046) -----	[2PCS]
D9. ø2 1/2" RUBBER DONUT (9310-010)-----	[2PCS]
D10. ø2 1/2"Xø26 RUBBER DONUT (9310-012)---	[2PCS]
D11. 3310mm STEEL CABLE -----	[1PCS]
D12. 2965mm STEEL CABLE -----	[1PCS]



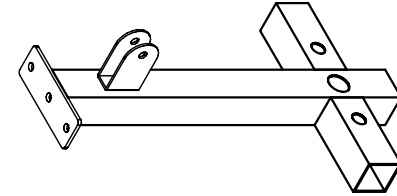
PLA-144

PARTS ILLUSTRATION SHEET

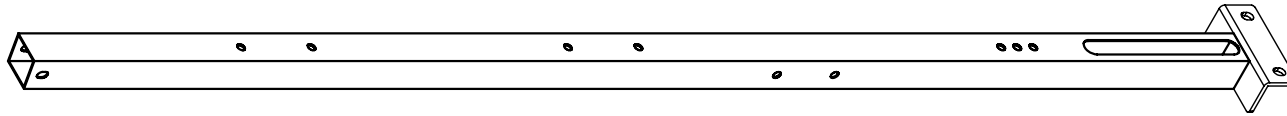
A [1PCS]



C [1PCS]



B [1PCS]



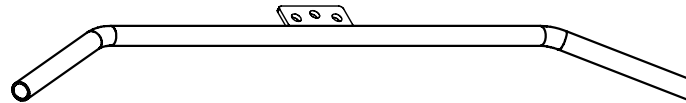
F [1PCS]



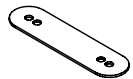
D [1PCS]



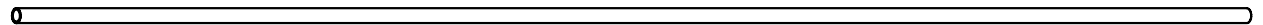
E [1PCS]



G [2PCS]



H [2PCS]



PLA-144

